



# Ionia County 4-H Record Book Beef Senior (15-19)



Place Beginning Project Picture Here

Place Ending Project Picture Here

**Name:** \_\_\_\_\_

**4-H Age (as of Jan. 1)** \_\_\_\_\_

**Club:** \_\_\_\_\_

**Years in 4-H:** \_\_\_\_\_ **Years in Project:** \_\_\_\_\_

**Member's Signature:** \_\_\_\_\_

**Parent's Signature:** \_\_\_\_\_

**Leader's Signature:** \_\_\_\_\_

# Why Keep Records?

By keeping records, you will be able to see how much progress you make this year and over the course of your 4-H career as you set goals and work to accomplish them.

Good records will:

- Help you learn about animals, their rate of growth, the feed they require, the cost of the feed they require and their habits.
- Increase understanding of your project's financial outcome.
- Assist you in gathering information to market your animal.
- Improve your management practices.
- Keep track of your project activities and learning experiences.
- Allow you to better plan for future livestock projects.

If you have questions or need help on this record book, please contact your leader, parent/guardian, or County MSU Extension Office.

## 4-H Information

### The 4-H Pledge

*Finish the pledge.*

**I pledge...**

---

---

---

---

---

---

---

### The 4-H Motto

*What is the 4-H Motto?*

“ \_\_\_\_\_ ”

### What 4-H Means to Me

*Describe what 4-H means to you.*

---

---

---

---

---

# Meetings / Participation

Keep track of meetings/events that you have participated in. Put a check in the appropriate month.

Description	Sep	Oct	Nov	Dec	Jan	Feb	Mar	Apr	May	Jun	Jul	Aug
Club Meetings (list)												
General Meetings (list)												
County Events: (list)												
State Events: (list)												
Community Service: (list)												
Committees: (list)												
Other: (list)												

Examples: Kettenun Center, Shows, Clinics, Workshops, etc.

# My Market Animal Project

1. Name and description of animal: \_\_\_\_\_  
\_\_\_\_\_
2. Why did you select this project? \_\_\_\_\_  
\_\_\_\_\_  
\_\_\_\_\_
3. What breed or type of project animal did you select and why? \_\_\_\_\_  
\_\_\_\_\_  
\_\_\_\_\_
4. Where did you get your project animals? Reasons for selecting that breeder, farm, or business? \_\_\_\_\_  
\_\_\_\_\_  
\_\_\_\_\_
5. What factors did you consider when selecting your project (breed, age, price, disposition)? \_\_\_\_\_  
\_\_\_\_\_  
\_\_\_\_\_
6. How many and what kinds of animals did you care for? (Examples: 2 crossbred hogs, 1 angus steer)  
\_\_\_\_\_  
\_\_\_\_\_
7. What type of housing did you provide your animals? \_\_\_\_\_  
\_\_\_\_\_  
\_\_\_\_\_
8. How did you provide fresh water to your animals? \_\_\_\_\_  
\_\_\_\_\_
9. What do the Average Daily Gain results (page 9) tell you? \_\_\_\_\_  
\_\_\_\_\_
10. Compare your profit/loss (page 11). What can be done to improve your profit? \_\_\_\_\_  
\_\_\_\_\_  
\_\_\_\_\_
11. List five qualities of a good showperson.
  - a. \_\_\_\_\_
  - b. \_\_\_\_\_
  - c. \_\_\_\_\_
  - d. \_\_\_\_\_
  - e. \_\_\_\_\_

12. List five qualities of a poor showperson.

- a. \_\_\_\_\_
- b. \_\_\_\_\_
- c. \_\_\_\_\_
- d. \_\_\_\_\_
- e. \_\_\_\_\_

13. What goals did you set for yourself and your project this year? \_\_\_\_\_

\_\_\_\_\_

\_\_\_\_\_

\_\_\_\_\_

14. List five ways that you helped or taught others this year:

- a. \_\_\_\_\_
- b. \_\_\_\_\_
- c. \_\_\_\_\_
- d. \_\_\_\_\_
- e. \_\_\_\_\_

15. List three things you have learned in your project this year.

- a. \_\_\_\_\_
- b. \_\_\_\_\_
- c. \_\_\_\_\_

16. Who has influenced you the most this year in this project and why? \_\_\_\_\_

\_\_\_\_\_

\_\_\_\_\_

\_\_\_\_\_

17. What management strategies did you implement to improve animal health and well-being? \_\_\_\_\_

\_\_\_\_\_

\_\_\_\_\_

\_\_\_\_\_

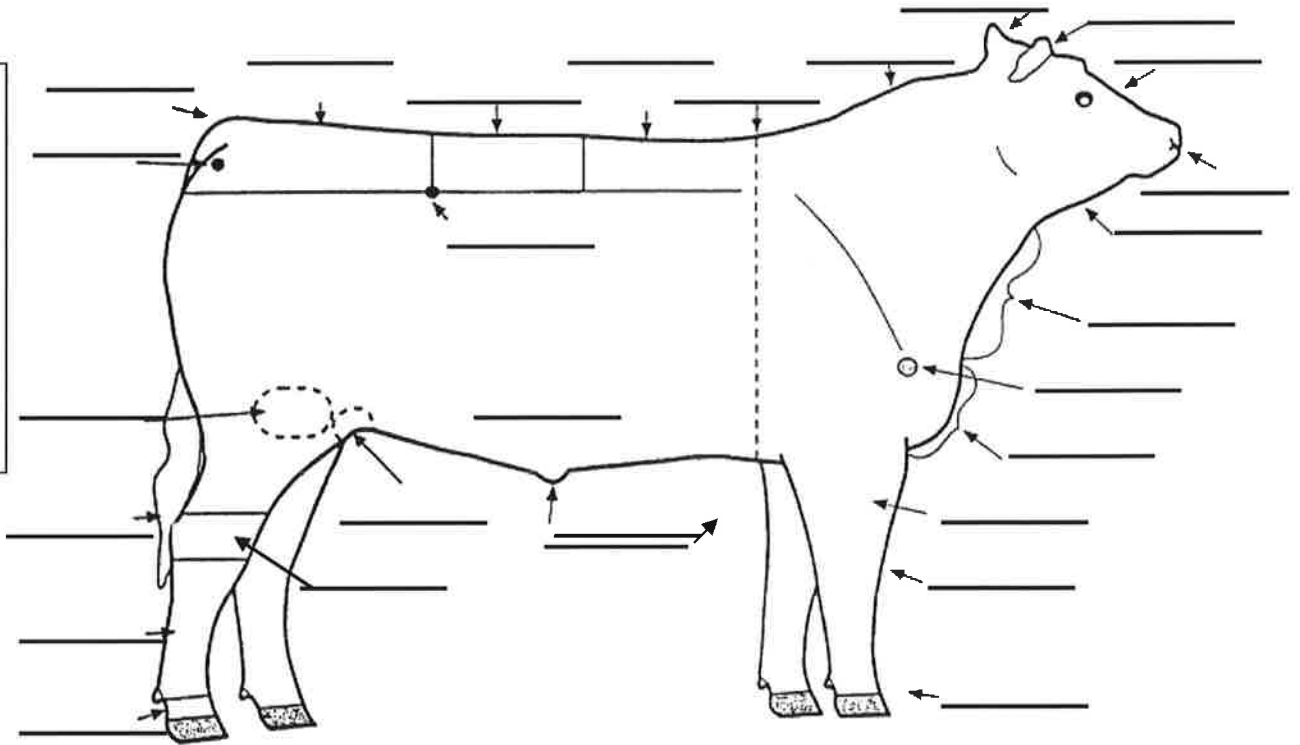
18. List the names of six potential buyers that you contacted about the Livestock Sale for this project:

- 1. \_\_\_\_\_ 2. \_\_\_\_\_ 3. \_\_\_\_\_
- 4. \_\_\_\_\_ 5. \_\_\_\_\_ 6. \_\_\_\_\_

# Parts of a Beef Animal

**Body Parts:**

Write in the number of the body part from the table below that matches the correct part on the animal.



1. Back	5. Crest	9. Face	13. Hoof	17. Muzzle	21. Poll	25. Stifle Joint
2. Belly	6. Dew Claw	10. Forearm	14. Hook	18. Pastern	22. Rear Flank	26. Switch
3. Brisket	7. Dewlap	11. Heart Girth	15. Knee	19. Pin	23. Rump	27. Tail Head
4. Cannon Bone	8. Ear	12. Hock	16. Loin	20. Point of Shoulder	24. Sheath	28. Throat

## Diseases

List 5 common diseases of beef

1. \_\_\_\_\_
2. \_\_\_\_\_
3. \_\_\_\_\_
4. \_\_\_\_\_
5. \_\_\_\_\_

## By – Products

List 5 by-products of beef

1. \_\_\_\_\_
2. \_\_\_\_\_
3. \_\_\_\_\_
4. \_\_\_\_\_
5. \_\_\_\_\_

## Breeds

List 5 breeds of beef

1. \_\_\_\_\_
2. \_\_\_\_\_
1. \_\_\_\_\_
2. \_\_\_\_\_
3. \_\_\_\_\_

## Retail Meat Cuts

List 5 retail meat cuts of beef

1. \_\_\_\_\_
2. \_\_\_\_\_
3. \_\_\_\_\_
4. \_\_\_\_\_
5. \_\_\_\_\_

# Beef Facts Crossword Puzzle

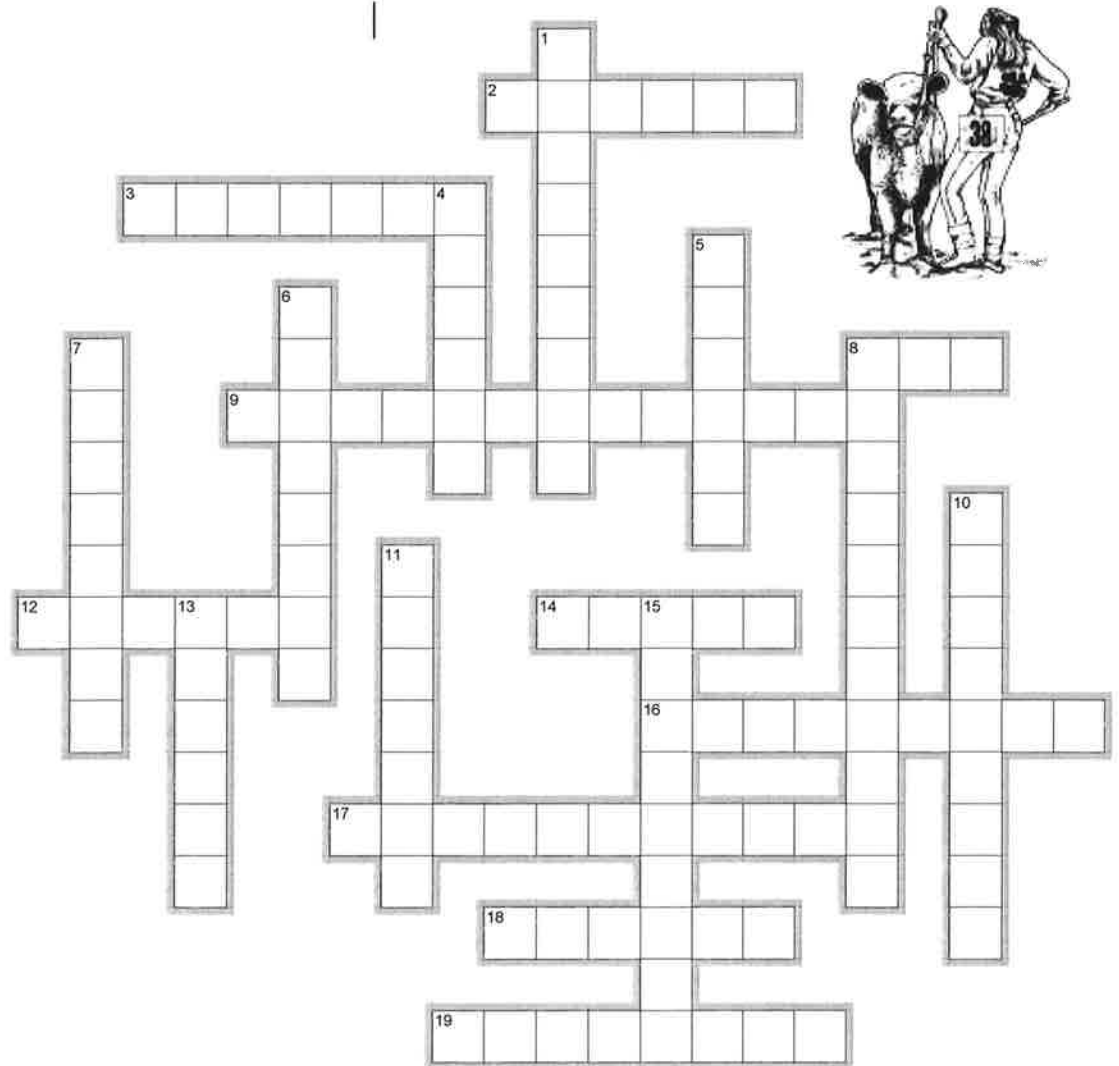
## Across

2. Born without horns
3. In beef, having flecks of fat interspersed in muscle
8. A wad of food burped up from the rumen to be rechewed
9. Giving an injection into a muscle
12. A rope or leather headgear used to control or lead an animal.
14. These animals are polled with a black, smooth coat. They are known for their carcass quality and milking, mothering, and reproductive abilities
16. These animals have red to dark red, spotted bodies with white to light straw faces. They are noted for their fast growth and milking abilities.
17. A cow's normal body \_\_\_\_\_ is 101.5 degrees F
18. To mature and fatten enough to butcher.
19. An animal that chews its cud and has four stomach compartments

## Down

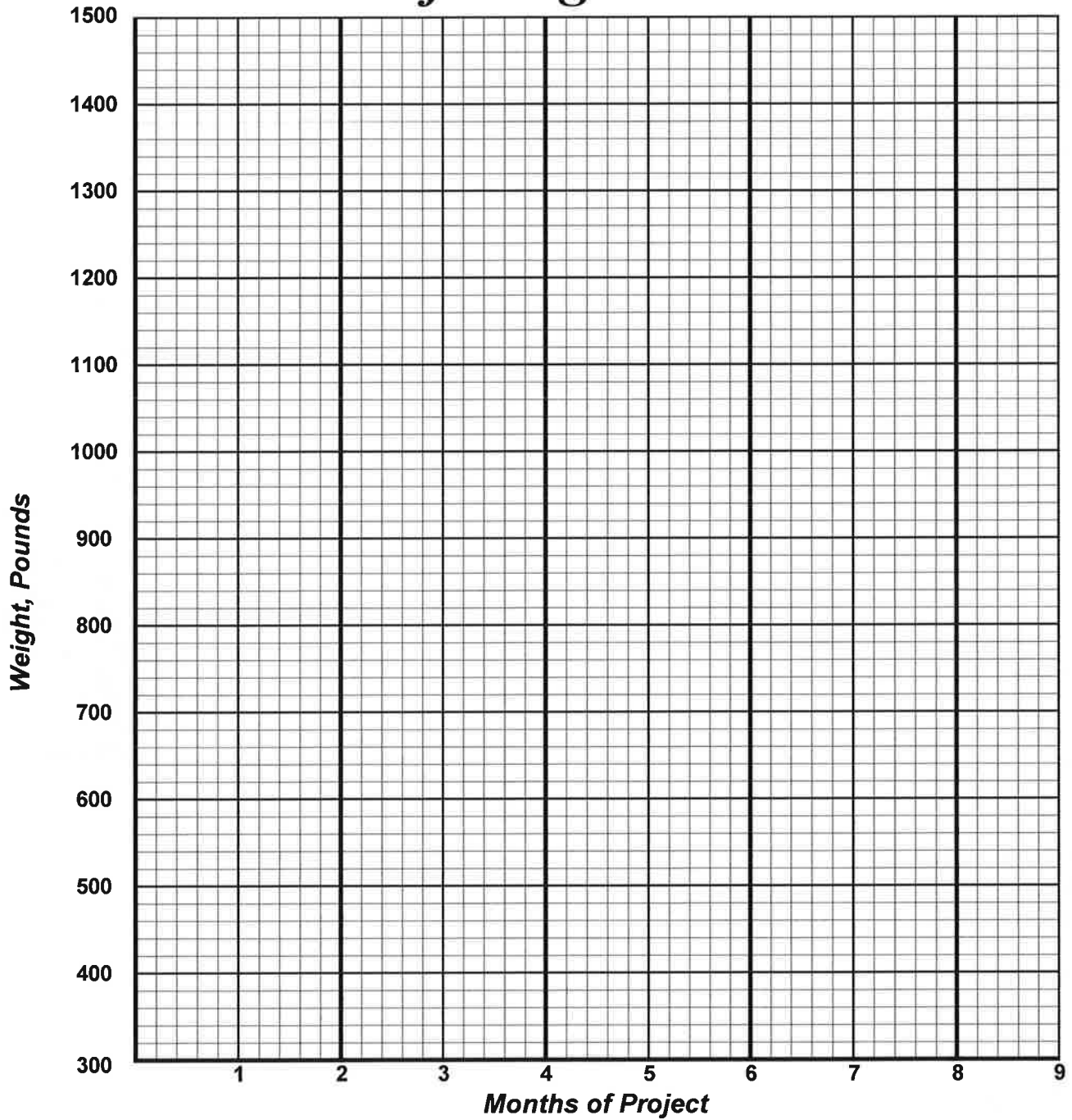
1. The first milk, high in antibodies, produced by a female mammal after it gives birth
4. Loose skin under the neck
5. Persistent diarrhea in young animals
6. A fungal infection causing scaly patches of skin.
7. Feed that is high in fiber and low in energy
8. An enclosed feeder for supplementing the ration of young animals that exclude larger animals.
10. These animals can be red, white, or roan in color. They are noted for their good disposition, mothering, and milking abilities.
11. A beef by-product
13. The permanent identification of animals produced by placing indelible ink under the skin.
15. Period of time a beef is pregnant: about 9 months

**ANGUS**  
**COLOSTRUM**  
**CREEPFEEDER**  
**CUD**  
**DEWLAP**  
**FINISH**  
**GESTATION**  
**HALTER**  
**INTRAMUSCULAR**  
**LEATHER**  
**MARbled**  
**POLLED**  
**RINGWORM**  
**ROUGHAGE**  
**RUMINANT**  
**SCOURS**  
**SHORTHORN**  
**SIMMENTAL**  
**TATTOO**  
**TEMPERATURE**



Created with EclipseCrossword — [www.eclipsecrossword.com](http://www.eclipsecrossword.com)

# *Beef Weigh Chart*



Knowing how much your animal is gaining each day is a critical part of raising a healthy animal. Weights can be measured by using scales, weight tapes, or estimated. Keep track of the weights in the table below and draw the results in the chart above.

Date Weighed									
# of Days									
Weight									
Lbs. Gained									
A.D.G. *									

\* A.D.G. = Average Daily Gain Calculated by pounds gained divided by # of Days

**For examples of how to complete this page, please contact the County 4-H Office.**



# *Beef Feed / Expense Record*

Write the information from the feed tag or the "recipe" mixture that you use: \_\_\_\_\_

---



---



---

Did the feed or mixture change during the project? Why and how did it change? \_\_\_\_\_

---



---

How did you determine how much to feed your animal? \_\_\_\_\_

---



---

<b>Pounds Fed</b>	Jan	Feb	Mar	Apr	May	Jun	Jul	Aug	TOTAL
<b>Hay / Roughage</b>									
<b>Grains</b> <small>(include all types of grain: corns, oats, etc.)</small>									
<b>Minerals</b>									
<b>Other:</b>									
<b>TOTAL Pounds Fed:</b>									
<b>TOTAL Cost of Feed:</b>	\$	\$	\$	\$	\$	\$	\$	\$	\$

<b>Expense Items</b>	Jan	Feb	Mar	Apr	May	Jun	Jul	Aug	TOTAL
<b>Veterinary Charges</b>									
<b>Vaccinations</b>									
<b>Wormer</b>									
<b>Bedding</b>									
<b>Housing</b>									
<b>Other:</b>									
<b>TOTAL Expense Items:</b>	\$	\$	\$	\$	\$	\$	\$	\$	\$

# Project Performance Summary

{ EMBED Excel.Sheet.8 }

## Financial Summary

INCOME					
<i>Ending Weight:</i>	<b>X</b>	<i>Market Price:</i>	=	<i>Expected Income from Animal:</i>	
Other Income: (List items:)					
<b>TOTAL EXPECTED INCOME</b>					

EXPENSES		
Purchase price of animal (if homegrown = market value @ weigh in)		
Cost of Feed (page 9)		
Cost of other Expense items (page 9)		
<b>TOTAL EXPENSES</b>		

<b>PROFIT / (LOSS): Income minus Expense</b> (negative number equals a loss)	
--	--





# Senior Beef Record Book Score Sheet

4-H Member: \_\_\_\_\_

4-H Club: \_\_\_\_\_

Page	Description	Possible Points	Your Points
1	COVER PAGE Completely filled out with all signatures and both pictures.	5	
2	4-H INFORMATION	5	
3	MEETINGS/PARTICIPATION	5	
4-5	MARKET ANIMAL PROJECT QUESTIONS Each question is completely and clearly answered.	15	
6	PARTS OF BEEF ANIMAL Placed correctly and information filled out.	10	
7	CROSSWORD	5	
8	BEEF WEIGH CHART	10	
9	FEED AND EXPENSE ITEMS	10	
10	PROJECT PERFORMANCE SUMMARY	15	
11	MY PROJECT SUMMARY Descriptive and at a minimum fills entire page.	10	
12	SUPPLEMENT PAGE	10	
	TOTAL POINTS A: 90-100, B: 80-89, C: 70-79	100	

MSU is an affirmative-action, equal-opportunity employer. Michigan State University Extension programs and materials are open to all without regard to race, color, national origin, gender, gender identity, religion, age, height, weight, disability, political beliefs, sexual orientation, marital status, family status or veteran status.

